

2.83

8.39) 2,8300

47

7.99
39
8.39
4.94

2.70 11

1.32
66

9.69
2.31
9.69
9.07
19.38
19.38
2.23
3.35

8.29
1.32
9.71
2.39
1.0

2.70
2.39
2.31

2.70
66
16.20
16.20
178.20

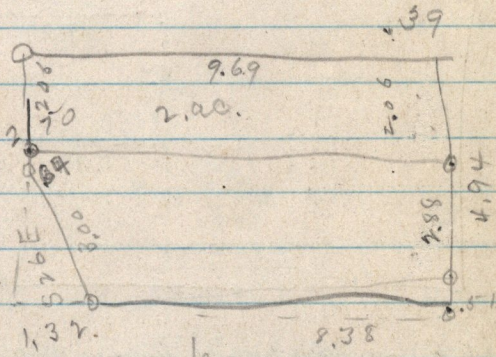
2830

9.71) 3,000
2913
8700

3.09) 3,000
283
3,000

2.70
30

2.70
2.06
2.64



288
57
3.39

2.70
2.64
3.34

3.09

4.94
9.69
2.06
58.14
19.38
19.38
1.99
2.00
2.938
1.6200
58.14

838
25

4.19.0
2.70
16.26
2.70
2.09.50
5.40
2.06

2.06
2.88

3.34